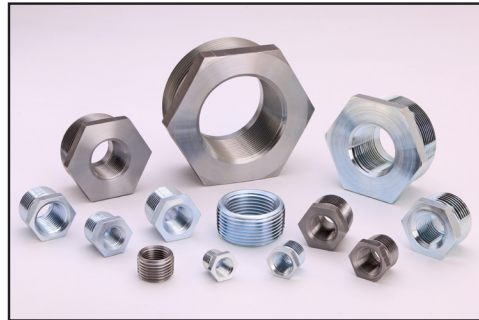




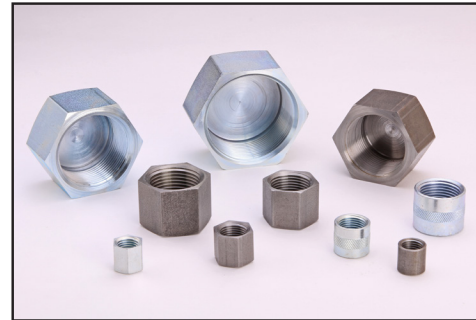
MANUFACTURERS OF PIPE FITTINGS

PRODUCT LINE

BUSHINGS



CAPS



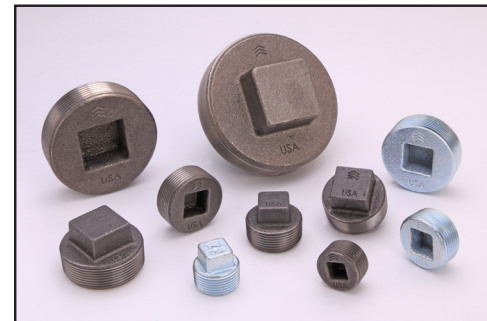
LEAD FREE BRASS



316 STAINLESS STEEL



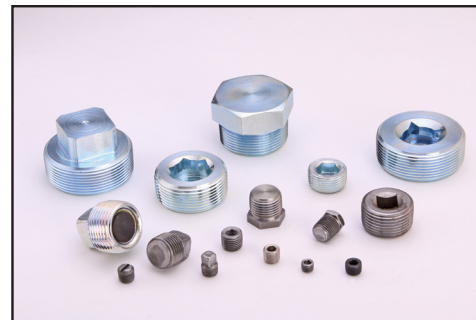
CAST IRON



COUPLINGS



PLUGS





MANUFACTURERS OF PIPE FITTINGS



Carbon Steel

Hex Bushings – 1/4" x 1/8" – 3" x 2- 1/2"

Available in Black & Galvanized Steel

Face Bushings – 1/4" x 1/8" – 1- 1/2" – 1- 1/4"

Available in Black & Galvanized Steel

Hex & Round Caps – 1/8" – 2"

Available in Black & Galvanized Steel

Square Head Plugs – 1/16" – 3"

Available in Black & Galvanized Steel

Hex & Square Socket Plugs – 1/16" – 2"

Available in Black & Galvanized Steel

Hex Head Plugs – 1/8" – 2 – 1/2"

Available in Black & Galvanized Steel

Magnetic Square Head Plugs – 3/8" – 2"

Available in Galvanized Steel

Alloy Steel Hex Socket Plugs – Rockwell 36/43 – 1/16" – 2"

Available in Black & Galvanized Steel

Flush Seal 7/8 Taper Hex Socket Plugs – 1/16" – 2"

Available in Black & Galvanized Steel

Alloy Steel 7/8 Taper Hex Socket Plug Rockwell 36/43 – 1/16" – 1- 1/4"

Available in Black & Galvanized Steel

Slotted Plugs – 1/8"

Available in Black & Galvanized Steel

Standard Merchant Full Couplings – 1/8" – 6"

Available in Black & Galvanized Steel

Standard Merchant Taper Tapped Full Couplings – 1/8" – 2"

Available in Black & Galvanized Steel

Standard Merchant Half Couplings – 1/8" – 6"

Available in Black Steel

Standard Merchant Taper Tapped Half Couplings – 1/8" – 2"

Available in Black Steel

Extra Heavy Couplings –Full – 1/8" – 8"

Available in Black & Galvanized Steel

Extra Heavy Couplings –Half – 1/8" – 8"

Available in Black Steel

Line Pipe Couplings – Extra Heavy Recessed – 1/8" – 8"

Available in Black & Galvanized Steel

Water Well Reamed & Drifted Couplings – 1-1/4" – 8"

Available in Black & Galvanized Steel

316 Stainless Steel

Square Head Plugs – 1/8" – 2"

Hex Socket Plugs – 1/16" – 2"

Hex Socket Plugs 7/8 Taper – 1/16" – 2"

Hex Head Plugs – 1/8" – 2"

Lead Free Brass

Hex Bushings – 1/4" x 1/8" – 1" x 3/4"

Face Bushings – 1/4" x 1/8" – 1" x 3/4"

Hex Caps – 1/8" – 1"

Square Head Plugs – 1/8" – 2"

Hex & Square Socket Plugs – 1/16" – 2"

1/4" & 1-1/4" – Hex Only

1-1/2" & 2" – Square Only

Flush Seal 7/8 Taper Hex Socket – 1/16" – 2"

Hex Head Plugs – 1/8" – 1"

Cast Iron

Square Head Plugs – 1" – 4"

Available in Black & Galvanized Steel

Square Socket Plugs – 1" – 4"

Available in Black & Galvanized Steel